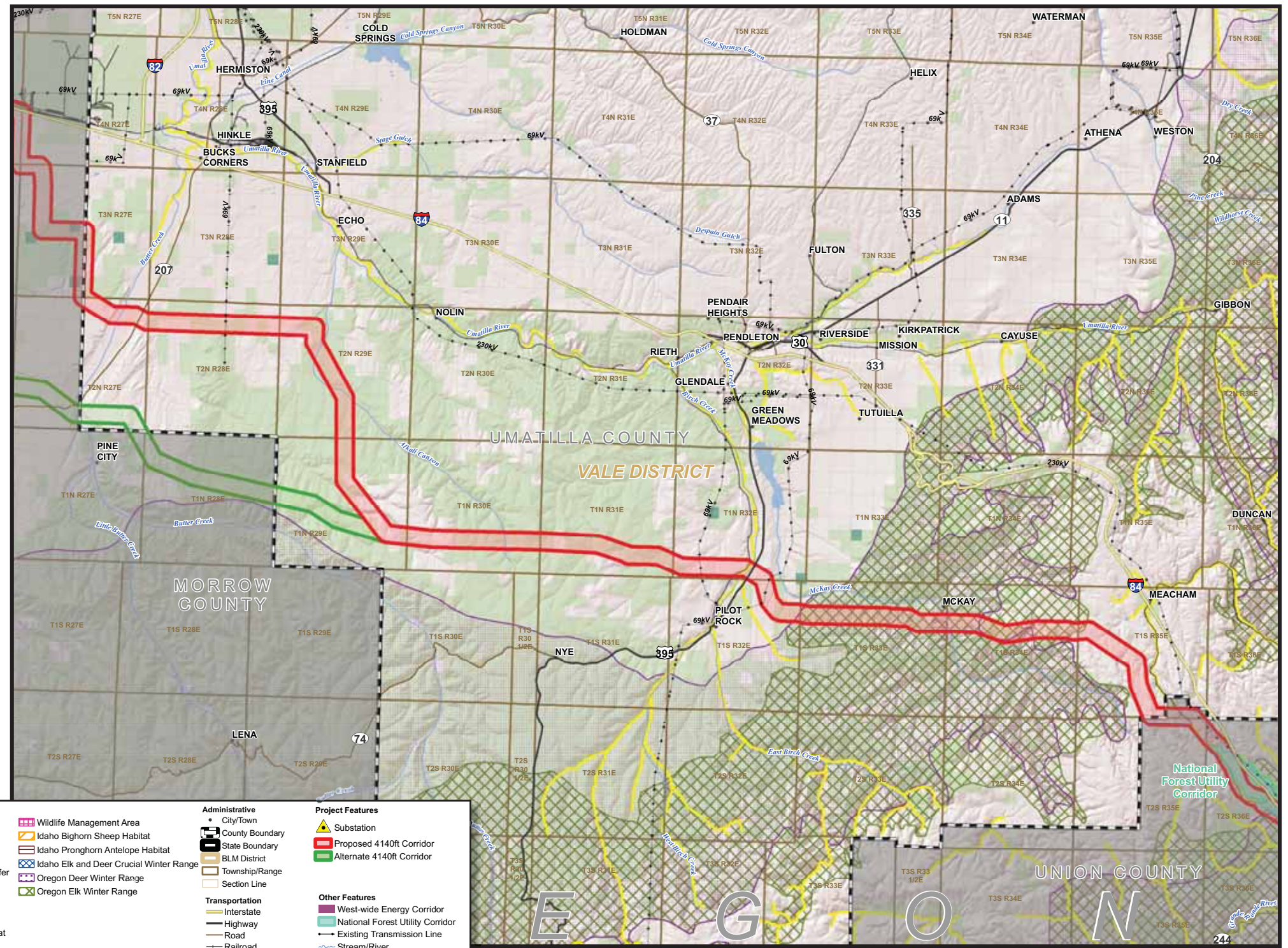


# Preliminary Biological Resources

- Wildlife and wildlife habitat
- Fish and fish habitat
- Plants
- Sensitive, threatened and endangered species
- Invasive and noxious species

Include in your comments any additional resources we should consider and, if possible, their location.



<p>August 2010</p>		<b>Biological Resources</b>	<b>Administrative</b>	<b>Project Features</b>
		<ul style="list-style-type: none"> <li>Special Status Fish Streams</li> <li>Sage-grouse Occupied 2-mi Lek Buffer</li> <li>Sage-grouse Occupied 2-mi Lek Buffer - Able to Permit</li> <li>Sage-grouse Unoccupied 2-mi Lek Buffer</li> <li>Key Habitat Area</li> <li>Idaho Sage-grouse Habitat</li> <li>High Restoration Potential</li> <li>Oregon Sage-grouse Sagebrush Habitat</li> <li>Oregon Potential Sage-grouse Habitat</li> </ul>	<ul style="list-style-type: none"> <li>Wildlife Management Area</li> <li>Idaho Bighorn Sheep Habitat</li> <li>Idaho Pronghorn Antelope Habitat</li> <li>Idaho Elk and Deer Crucial Winter Range</li> <li>Oregon Deer Winter Range</li> <li>Oregon Elk Winter Range</li> </ul>	<ul style="list-style-type: none"> <li>Substation</li> <li>Proposed 4140ft Corridor</li> <li>Alternate 4140ft Corridor</li> </ul>
		<b>Other Features</b>	<b>Transportation</b>	<b>Other Features</b>
		<ul style="list-style-type: none"> <li>West-wide Energy Corridor</li> <li>National Forest Utility Corridor</li> <li>Existing Transmission Line</li> <li>Stream/River</li> </ul>	<ul style="list-style-type: none"> <li>City/Town</li> <li>County Boundary</li> <li>State Boundary</li> <li>BLM District</li> <li>Township/Range</li> <li>Section Line</li> <li>Interstate</li> <li>Highway</li> <li>Road</li> <li>Railroad</li> </ul>	

No warranty is made as to the accuracy, reliability, or completeness of these data for individual or aggregate use with other data. Original data were compiled from various sources. This information may not meet National Map Accuracy Standards. This product was developed through digital means and may be updated without notification.