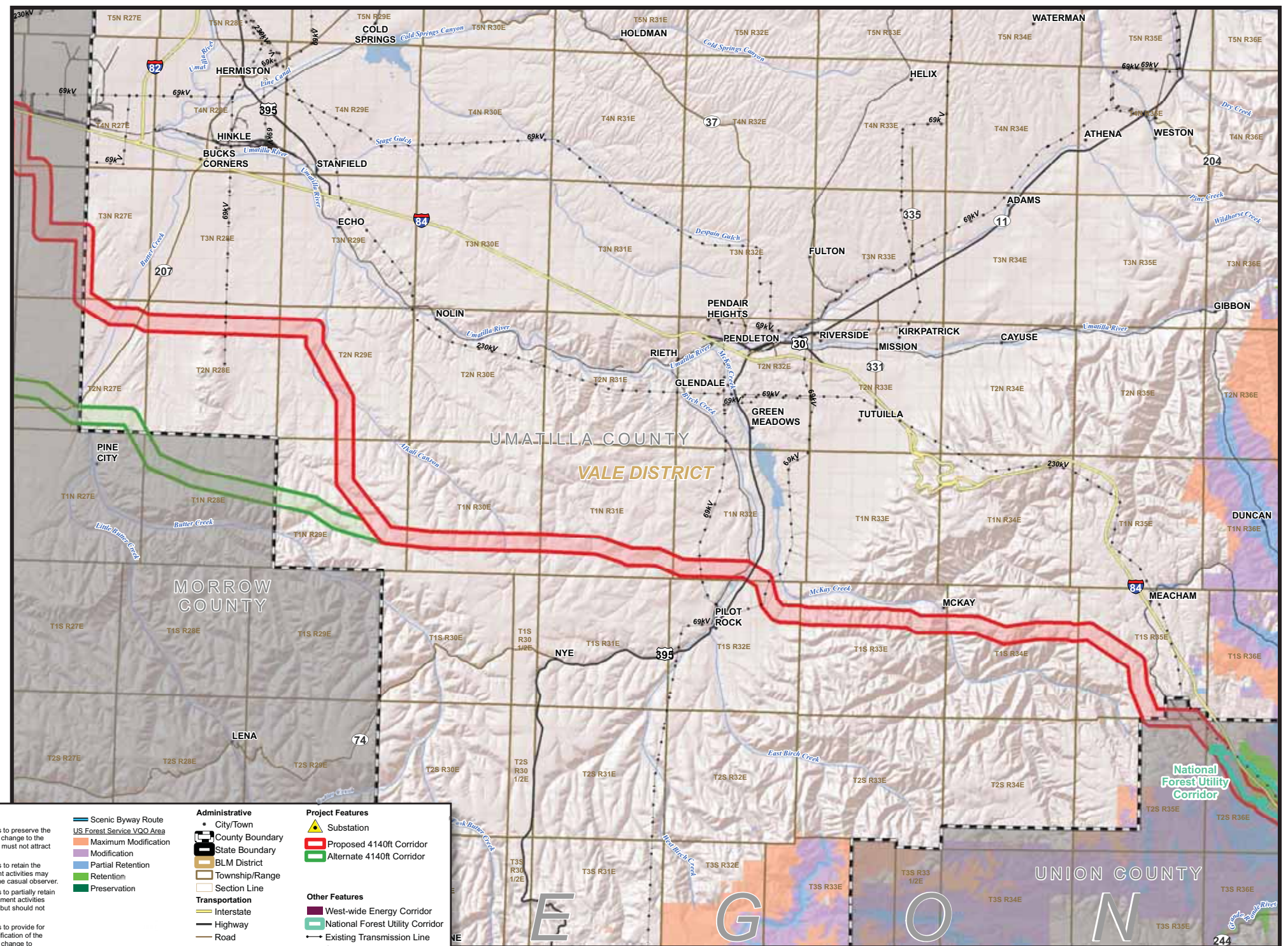


Preliminary Visual Resources

- Designated scenic corridors
- BLM and USFS visual resource plan standards

Include in your comments any additional resources we should consider and, if possible, their location.



August 2010

Overview Map

Visual Resources

BLM Visual Resource Management Classes

BLM VRM Class 1 - The objective of this class is to preserve the existing character of the landscape. The level of change to the characteristic landscape should be very low and must not attract attention.

BLM VRM Class 2 - The objective of this class is to retain the existing character of the landscape. Management activities may be seen, but should not attract the attention of the casual observer.

BLM VRM Class 3 - The objective of this class is to partially retain the existing character of the landscape. Management activities may attract the attention of the casual observer, but should not dominate the view of the casual observer.

BLM VRM Class 4 - The objective of this class is to provide for management activities which require major modification of the existing character of the landscape. The level of change to the characteristic landscape can be high.

<ul style="list-style-type: none"> — Scenic Byway Route — US Forest Service VQQ Area — Modification — Partial Retention — Retention — Preservation 	<p>Administrative</p> <ul style="list-style-type: none"> ● City/Town County Boundary State Boundary BLM District Township/Range Section Line <p>Transportation</p> <ul style="list-style-type: none"> — Interstate — Highway — Road — Railroad 	<p>Project Features</p> <ul style="list-style-type: none"> ▲ Substation Proposed 4140ft Corridor Alternate 4140ft Corridor <p>Other Features</p> <ul style="list-style-type: none"> West-wide Energy Corridor National Forest Utility Corridor — Existing Transmission Line — Stream/River
--	---	---

No warranty is made as to the accuracy, reliability, or completeness of these data for individual or aggregate use with other data. Original data were compiled from various sources. This information may not meet National Map Accuracy Standards. This product was developed through digital means and may be updated without notification.