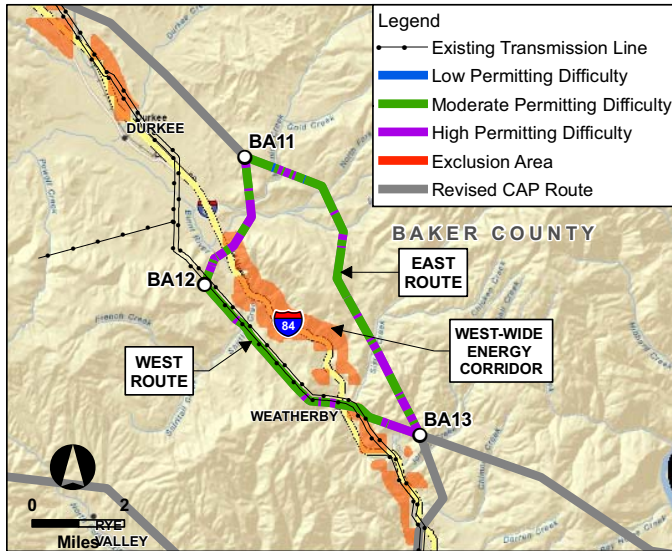
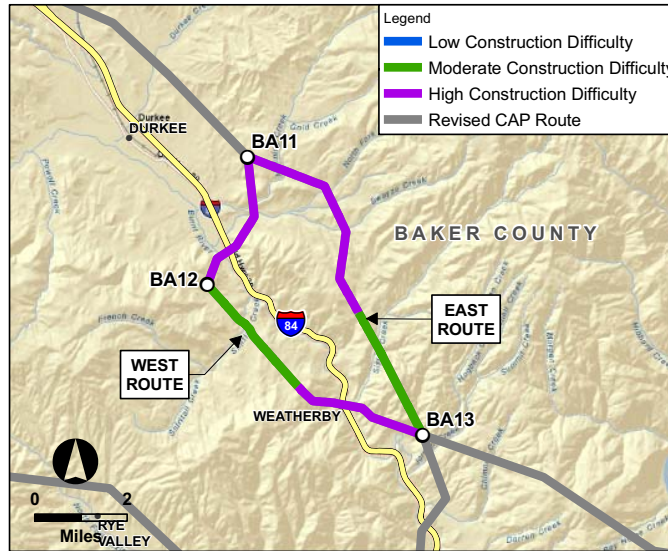


CENTRAL PAT - WEATHERBY

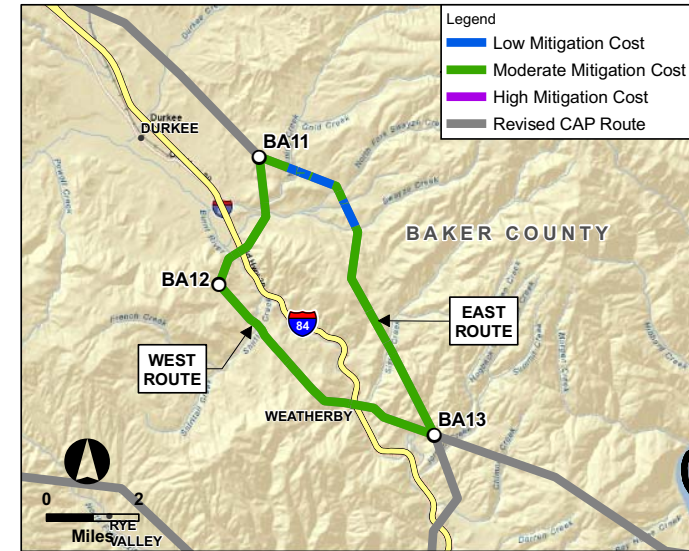
PERMITTING DIFFICULTY



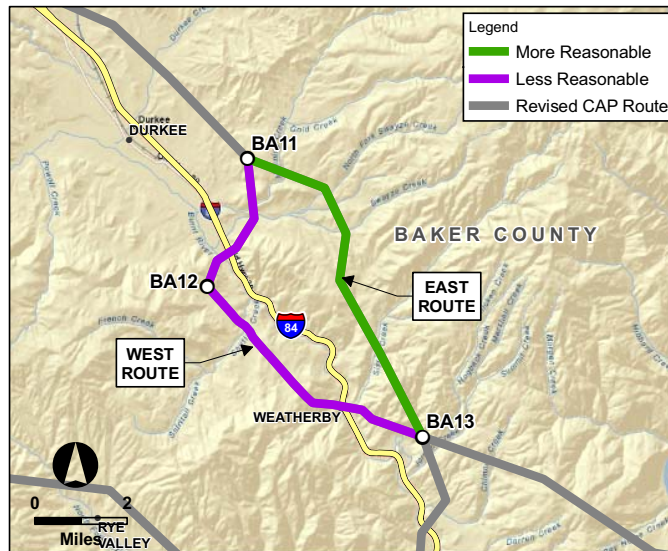
CONSTRUCTION DIFFICULTY



MITIGATION COST



SUMMARY



- 2 ROUTES WERE CONSIDERED:
EAST ROUTE (BA11-BA13) AND
WEST ROUTE (BA11-BA12-BA13)

- THE EAST ROUTE IS THE MORE
REASONABLE ROUTE

- THE EAST ROUTE IS MORE REASONABLE
THAN THE WEST ROUTE BECAUSE IT:

- 1.1 miles shorter
- Crosses 0.8 fewer miles of 1200ft Historic Trail Buffer Zone
- Crosses 0.6 fewer miles of Intact Oregon Trail Segments
- Crosses 3.5 fewer miles of Deer Winter Habitat
- Crosses 2.7 fewer miles of Elk Winter Habitat
- Crosses 1.9 fewer miles of Private Land

WEATHERBY MILEAGE SUMMARY

	WEST ROUTE (BA11-BA12-BA13)	EAST ROUTE (BA11-BA13)
	LENGTH IN MILES	
PERMITTING DIFFICULTY		
LOW	0.0	0.1
MODERATE	6.1	5.5
HIGH	3.0	2.1
EXCLUSION	0.0	0.0
CONSTRUCTION DIFFICULTY		
LOW	0.0	0.0
MODERATE	3.0	3.0
HIGH	6.1	4.7
MITIGATION COST		
LOW	0.0	1.6
MODERATE	9.1	6.1
HIGH	0.0	0.0

WEATHERBY DATA TABLE

Resource Group	Regulatory Criteria Description	Permitting Difficulty	Community Criteria*	WEST ROUTE (BA11-BA12-BA13)	EAST ROUTE (BA11-BA13)
				LENGTH IN MILES	
TOTAL LENGTH				9.1	7.7
1	Cultural Resources	Within 1200ft Historic Trail Buffer	Avoidance Mod	2.3	1.5
2	Cultural Resources	Intact Oregon Trail Segment (OR BLM)	Avoidance High	0.6	-
3	Fish and Wildlife	ODFW Conservation Opportunity Area	Avoidance Low	2.2	-
4	Fish and Wildlife	ODFW Big Game Deer Winter Range	Avoidance Mod	CC	5.6
5	Fish and Wildlife	ODFW Big Game Elk Winter Range	Avoidance Mod	CC	-
6	Fish and Wildlife	Sage-grouse Core Area 1: Sagebrush Habitat (Oregon)	Avoidance Mod	0.1	0.4
7	Fish and Wildlife	Sage-grouse Core Area 2: Potential Habitat (Oregon)	Avoidance Low	6.5	4.9
8	Land Use	Cropland/Irrigated Agriculture	Avoidance High	0.3	-
9	Land Use	Exclusive Farm Use Zone/Multiple Use Range Zone	Avoidance High	8.0	7.7
10	Land Use	Grazing/Pasture - OR	Avoidance Low	7.7	6.1
11	Land Use	Forested Land: Private	Avoidance Mod	-	-
12	Land Use	Forested Land: Public	Avoidance Mod	-	-
13	Ownership	Bureau of Land Management	Avoidance Low	CC	2.2
14	Ownership	Private	Avoidance Low	CC	5.0
15	Geological Resources	Erosion Hazard: High (NRCS Soil Data - Grant Co, OR data n/a)	Avoidance Mod	-	1.9
16	Geological Resources	Erosion Hazard: Moderate (NRCS Soil Data - Grant Co, OR data n/a)	Avoidance Mod	2.9	2.9
17	Geological Resources	Erosion Hazard: Low (NRCS Soil Data - Grant Co, OR data n/a)	Avoidance Low	6.2	2.9
18	Geological Resources	Within 500ft of Fault Line	Avoidance Low	0.2	0.4
19	Geological Resources	U.S. Geological Survey Active Mining Area	Avoidance High	0.2	-
20	Geological Resources	Prime Farmland/Arable Land: Soils Class 1-4	Avoidance Mod	CC	5.6
21	Geological Resources	Oregon Landslide Feature: Talus-Colluvium	Avoidance Mod	0.9	0.2
22	Slope	Slope 0-15%	Opportunity	2.8	2.2
23	Slope	Slope 15-25%	Avoidance Low	2.8	2.3
24	Slope	Slope 25-35%	Avoidance Mod	1.3	1.5
25	Slope	Slope >35%	Avoidance High	2.2	1.7
26	Water and Wetlands	National Wetland Inventory	Avoidance Mod	CC	0.2
27	Water and Wetlands	Oregon Watershed Restoration Inventory Project Area	Avoidance Low	0.4	0.1
28	Other Features	Within 200ft of Existing Pipeline	Opportunity	CC	0.3
29	Other Features	West-wide Energy Corridor	Opportunity	CC	0.4
30	Other Features	Parallel to Existing Transmission Line	Opportunity	6.0	-

* Rows designated with "CC" indicate Community Criteria. These are the criteria the Project Advisory Teams wanted considered in the analysis.